



## **CHEM FLOWTRONICS**

### **Stainless Steel In-Line Reduced Flow Reflux Splitters**



#### **AUTOMATIC or MANUAL REFLUX RATIO CONTROL**

- Precise Split — very low hold-up
- High power solenoid
- 23 gpm model
- Automatic controller
- Only one moving part
- Fail-safe design
- Adaptable to any size column
- Interchangeable
- Easily maintained

#### **FOR BATCH OR CONTINUOUS SYSTEMS**

- External mounting on collector makes splitters interchangeable; allows simple inspection and service.
- Standard design provides reflux on power failure. (Total product take-off optional)
- Rigid stainless steel tongue assures positive shut-off.
- Collectors available in standard and extra low  $\Delta P$  design for vacuum service.

#### **ELECTRICAL CHARACTERISTICS**

115-125 volts, 50-60 Cycles

1" size - 0.3 amps

2" size - 0.5 amps

Explosion proof or general purpose enclosures

**PRESSURE RATING:** FV-150 psi (300 psi optional)

**TEMPERATURE:** 450°F

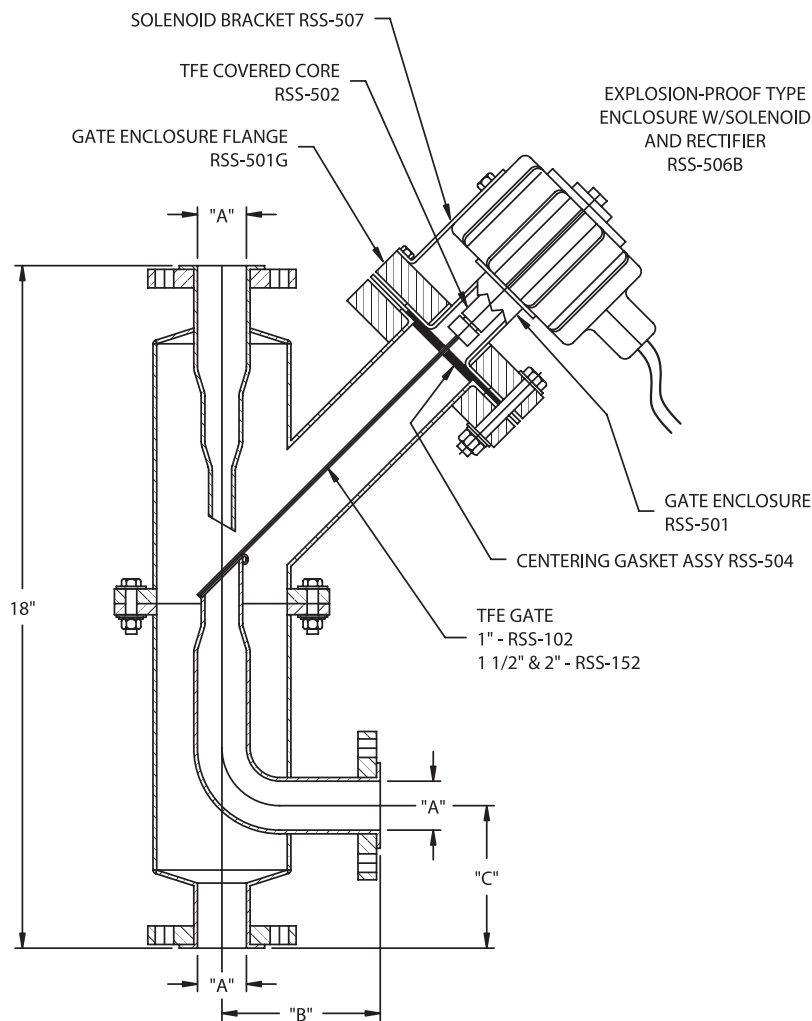
**CONSTRUCTION MATERIAL:** Type 316 Stainless steel (other materials on request).



**CHEM  
FLOWTRONICS**

Chem Flowtronics, Inc.  
195 Paterson Ave., Little Falls, NJ 07424  
Tel: 800-486-3356 · 973-785-0001  
Fax: 973-785-8051  
Email: [info@chem-flowtronics.com](mailto:info@chem-flowtronics.com)  
Web: [www.chem-flowtronics.com](http://www.chem-flowtronics.com)

# Stainless Steel In-Line Reduced Flow Reflux Splitters



## REFLUX SPLITTER STAINLESS STEEL DESIGN DIMENSIONAL DATA

SIZE	"A"	"B"	PART NUMBER
1"-9	1"	4 3/16"	SP-25/9-SS
1"-16	1"	4 3/16"	SP-25/16-SS
1 1/2"-25	1 1/2"	4 3/16"	SP-40/25-SS
2"-28	2"	4 1/2"	SP-50/28-SS



Chem Flowtronics, Inc.  
195 Paterson Ave., Little Falls, NJ 07424  
Tel: 800-486-3356 · 973-785-0001 · Fax: 973-785-8051  
Email: [info@chem-flowtronics.com](mailto:info@chem-flowtronics.com)  
Web: [www.chem-flowtronics.com](http://www.chem-flowtronics.com)